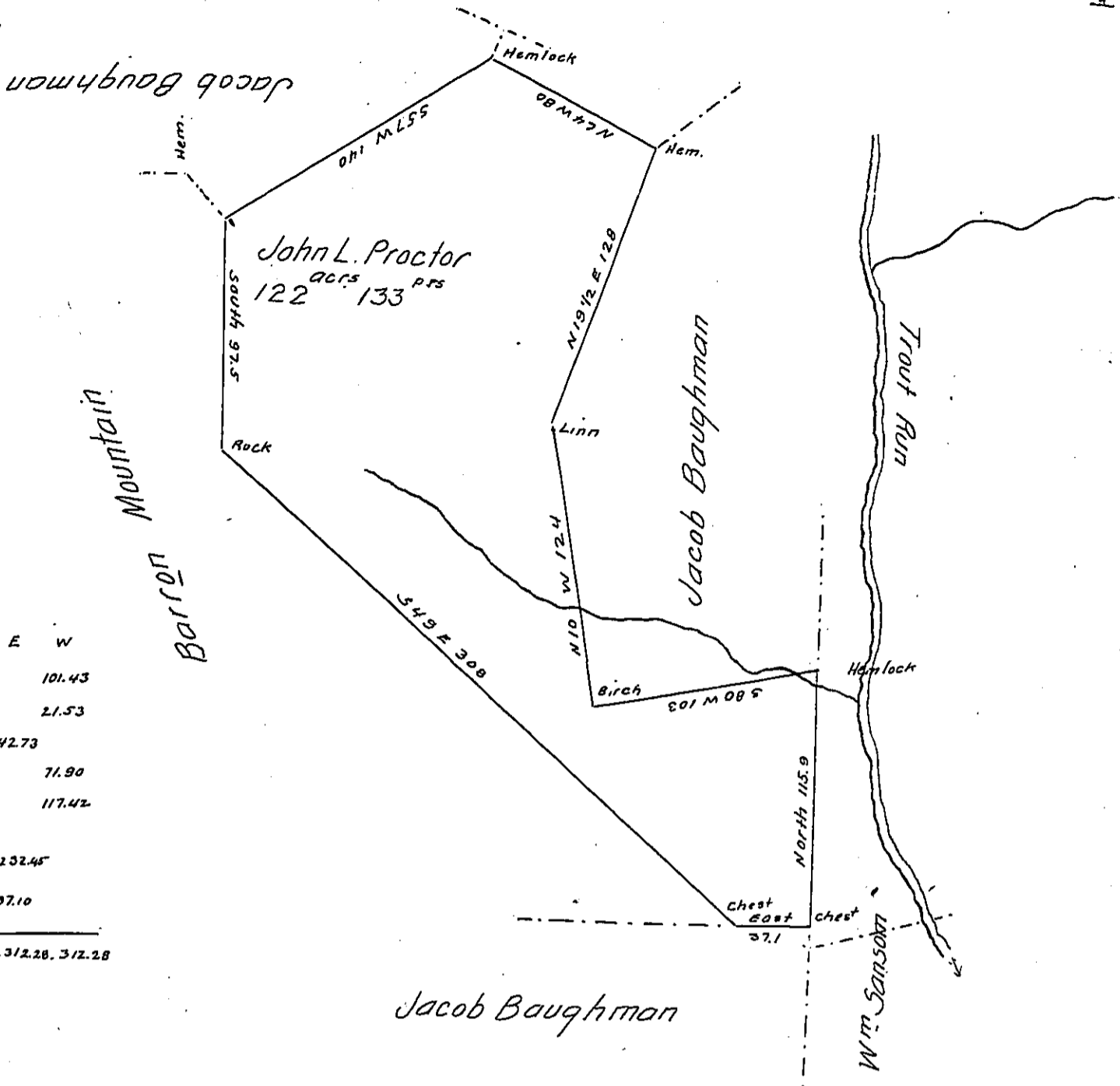


FORM No. 1.



State	Coor.	Dist	N	S	E	W
1	S 80 W	103		17.88		101.43
2	N 10 W	124	122.12			21.53
3	N 19 1/2 E	128	120.65		42.73	
4	N 4 W	80	35.07			71.90
5	S 37 W	140		72.25		117.42
6	South	97.5		97.5		
7	S 29 E	308		202.08	132.45	
8	East	37.10			37.10	
9	North	115.87	115.87			
393.71 393.71 312.28, 312.28						

The above Described tract of Land Surveyed Feb. 18/54 to John L. Proctor on His Warret for 150 ^{acrs}. Dated Decr. 21st 1853. (unimproved) if ^{being} all he thought worth including. Situated on the West Branch and Main trout Run in Lidie Township Clinton C^y. Containing 122 acrs. 133 Patches So answers.

James Daniel } C.S.

IN TESTIMONY that the above is a copy of the original remaining on file in the Department of Internal Affairs of Pennsylvania, made conformably to an Act of Assembly approved the 16th day of February, 1833, I have hereunto set my Hand and caused the Seal of said Department to be affixed at Harrisburg, this eleventh day of May 1906.

George R. Brown
Secretary of Internal Affairs.